



COLORADO
Wildfire
Resiliency
Code Board

CCI Briefing
Dec 03 2025

Why a Wildfire Resiliency Code?



Colorado's Most Destructive Fires by Homes Lost

Rank	Fire	Homes Lost	Year
1	Marshall	1,084	2021
2	Black Forest	489	2013
3	East Troublesome	366	2020
4	Waldo Canyon	346	2012
5	High Park	259	2012



East Troublesome Fire, October 2020

Background

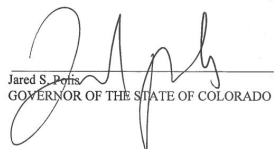


An Act

SENATE BILL 23-166

CONCERNING THE ESTABLISHMENT OF A WILDFIRE RESILIENCY CODE BOARD, AND, IN CONNECTION THEREWITH, REQUIRING THE WILDFIRE RESILIENCY CODE BOARD TO ADOPT MODEL CODES, REQUIRING GOVERNING BODIES WITH JURISDICTION IN AN AREA WITHIN THE WILDLAND-URBAN INTERFACE TO ADOPT CODES THAT MEET OR EXCEED THE STANDARDS SET FORTH IN THE MODEL CODES, AND MAKING AN APPROPRIATION.

APPROVED Friday, May 12th, 2023 at 9:45am
(Date and Time)


Jared S. Polis
GOVERNOR OF THE STATE OF COLORADO

Mission:

Ensuring that colorado communities are safer from and more resilient to wildfires by reducing the risk to people and property through the adoption of statewide codes and standards based on best practice approaches to hardening structures and reducing fire risk in the defensible space surrounding structures in the wildland-urban interface in colorado.

Code Requirements



2025 CWRC CH4

Fire Intensity	Fire Intensity on Map	Hardening Requirements
Class 1	Low Fire Intensity (Yellow)	Baseline: minimum requirements for new construction and significant additions/alterations in the WUI.
Class 2	Moderate to High Fire Intensity (Orange and Red)	Cumulative: All Class 1 requirements PLUS additional requirements for higher fire intensity areas.

Key Requirement Categories

The requirements fall into two complementary categories, with Class 2 addressing more features in both.

1. **Structure Hardening:** Focuses on construction materials and methods to make the building resistant to ignition from embers and flames (e.g., Roofing, Exterior Walls, Decking).
2. **Site Management/Defensible Space:** Focuses on reducing fuel loads around a structure to decrease fire intensity.



Illustration: Bonnie Palmatroy, Colorado State University

Code Scope



****This is NOT a retrofit code.****

2025 CWRC CH1

To what does the code apply?

When in the identified WUI, the permitting and Inspections of:

- New construction of structures and defensible space around structures - Residential and Commercial
- Significant alterations/additions/repairs
 - 500sf+ increased footprint of a structure
 - 25%+ of an exterior of a structure affected

To what does the code NOT apply?

- Interior alterations of existing structures
- 35acre+ parcels with only 1 residential structure NOT abutting residential or commercial area
- Exterior painting, staining and similar routine maintenance work

WRCB: What is the WUI?



Wildland-Urban Interface (WUI)

“That geographical area where structures and other human development meets or intermingles with wildland or vegetative fuels”

Code Application



2025 CWRC CH3

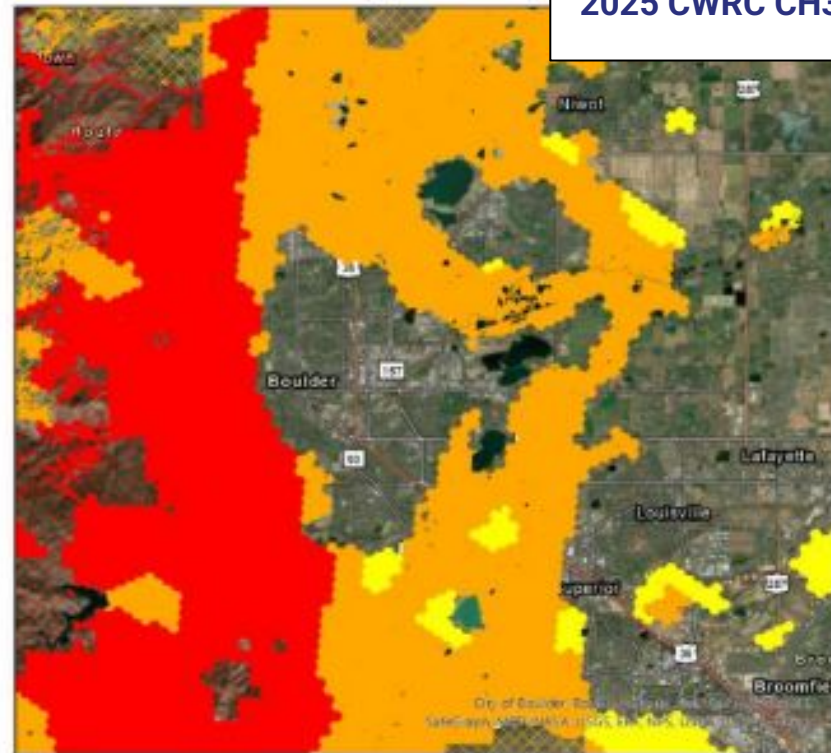
2 levels of code requirements

Application based upon illustrated fire hazard on map

Class 1 - applies to all areas identified with low fire hazard (yellow)

Class 2 - applies to areas identified with moderate to high fire hazard (orange and red)

Locally: Code Officials may make determinations based on ground-truthing as needed



Mapping



2025 CWRC CH3

Governing bodies shall either adopt the state map **or** develop a local map

- 1) **State map** developed to identify fire hazard and fire intensity throughout CO
 - Informed by data modeling that identifies:
 - Slope
 - ~50 fuel types
 - 40yrs of critical fire weather
- 2) **Local map** must illustrate information based on actual conditions present that either meets or exceeds the intent of the code.

State Map for Code Application



Administration



Who shall adopt the code?

Governing bodies with jurisdiction in the WUI that have the authority to adopt building or fire codes

- 1) City council, town council, board of trustees, or other governing body of a city, town, or a city and county
- 2) Board of directors of a fire protection district
- 3) Governing body of an improvement district providing fire protection services
- 4) Board of county commissioners with respect to the area within a county that is outside the corporate limits of a city or town and outside the boundaries of a fire protection district

Who shall enforce the code?

Code enforcement in accordance with rules and regulations of a governing body

Timeline



*The period to comply with an adopted code shall be in accordance with the rules and regulations of the governing body or within three months of the date the code is adopted by the governing body, whichever is sooner.

Contact and Resources



[Wildfire Resiliency Code Board website](#)

Contact:

cdps_dfpc_wrcb@state.co.us



Wildfire Resiliency Code Board