

SB174: LAND USE LEGISLATURE

A Planner's Perspective

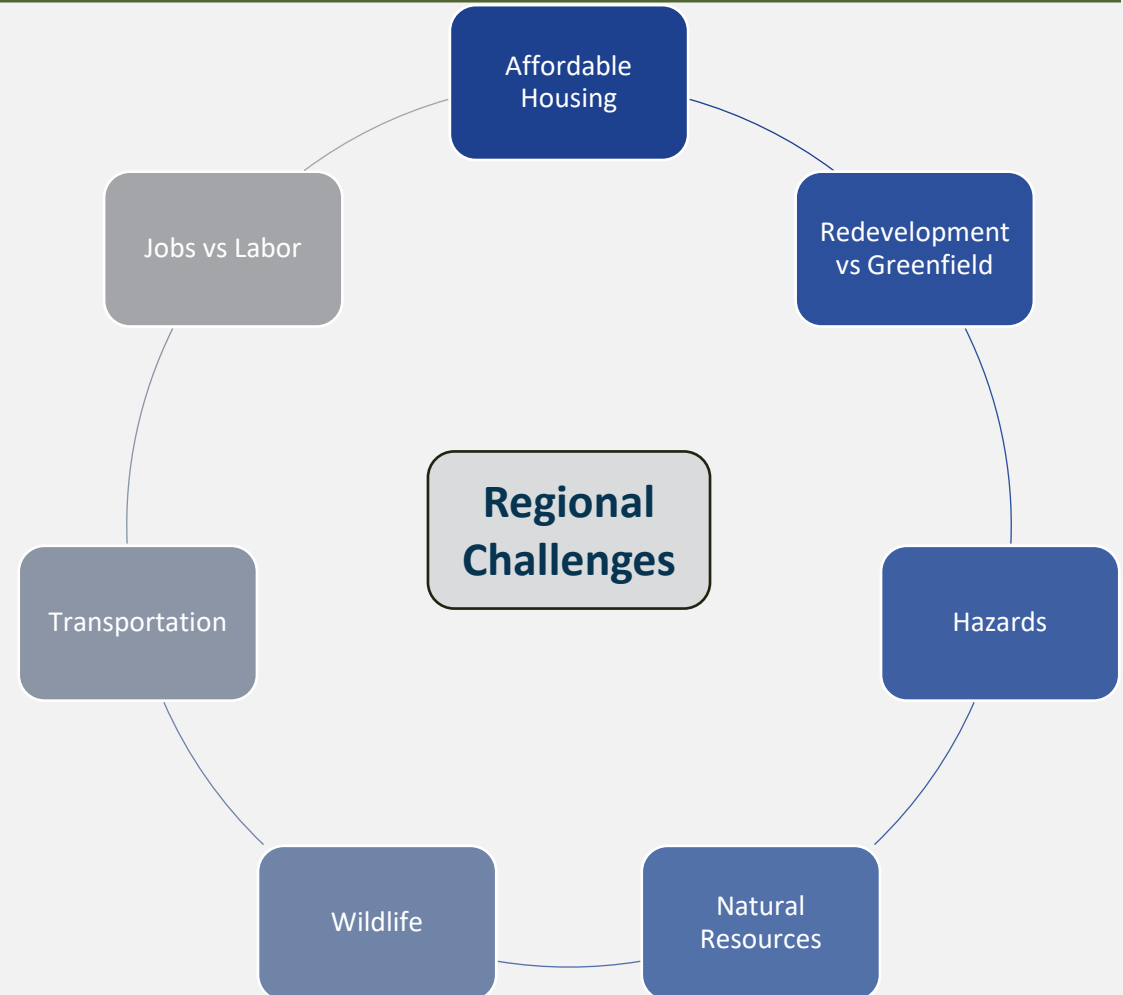
December 1, 2025

A photograph of a two-lane asphalt road winding through a grassy, hilly landscape under a cloudy sky. The road has a dashed white center line and solid white edge lines. In the foreground, the words "CHANGE AHEAD" are painted in large, white, sans-serif capital letters across the road. Above the text, a white arrow is painted pointing forward along the center of the road. The background shows rolling green hills and a line of trees in the distance.

**CHANGE
AHEAD**

Good Planning

- Community-based solutions.
- These are regional issues that don't know political boundaries.
- How do we best serve the general public?
- Regional collaboration.



Considerations

- ✓ Strive to implement good planning in your community.
- ✓ Don't just "check the box".
- ✓ There is a TON of extra requirements coming down.
- ✓ Do your staff have the tools and resources they need?

An aerial photograph of a suburban neighborhood. In the foreground, there is a large, open grassy field. To the left of the field, there are several houses with orange roofs. To the right, there is a playground with red and white equipment. In the background, there are more houses and a road. The text "WHERE TO START?" is overlaid in the center of the image.

WHERE TO START?

Think Incrementally

- ☐ Identify the **OBJECTIVES** of your land development policies
- ☐ Identify the **ALIGNMENT** between Objectives, Regulations, and Legislation
- ☐ **ASSESS** current regulations
- ☐ Identify needed **CHANGES AND AMENDMENTS**
- ☐ Plan for **UPDATE(S)**



www.Colorado.Planning.org

TJ Dlubac, AICP

APA CO Legislative Committee Member
Tdlubac@PlanStrategize.com

Shaida Libhart, AICP

Co-Chair of APA CO Legislative Committee

Scott Bressler, AICP

Co-Chair of APA CO Legislative Committee
Legislative@apacolorado.org