



**COLORADO**

Jarett Hughes  
Senior Policy Advisor on Aging  
Governor's Office



**COLORADO**  
Governor Jared Polis  
Policy & Research

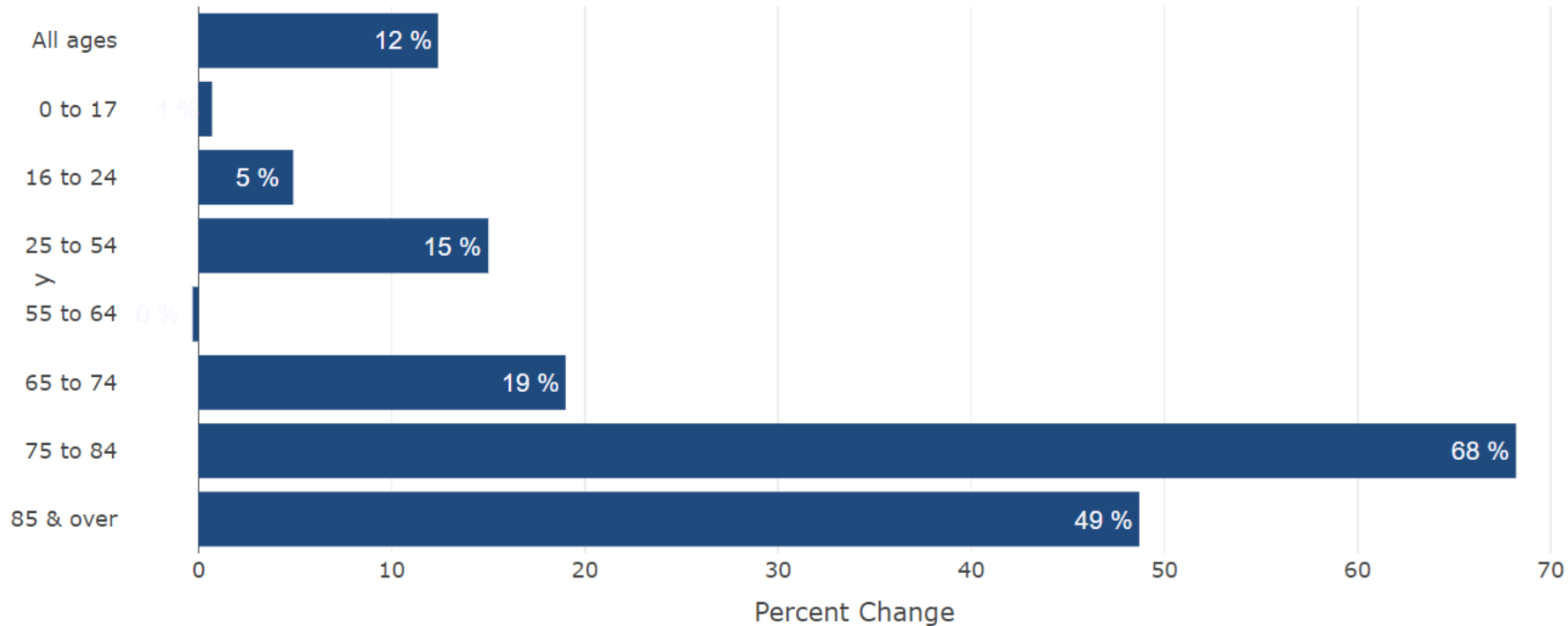
**November 29, 2021**

“A growing and aging population impacts every department in the State, from Human Resources to Natural Resources.”

Office of State Planning and Budgeting, FY  
2022-2023 Budget Request

# Colorado's Shifting Demographics

Projected Population Change by Age Group, 2020 to 2030



## Coloradans under age 18

## Coloradans aged 60+

2020

1.33M

1.23M

2025

1.30M

1.39M

2030

1.35M

1.54M

2035

1.42M

1.66M

2040

1.43M

1.76M

2045

1.46M

1.89M

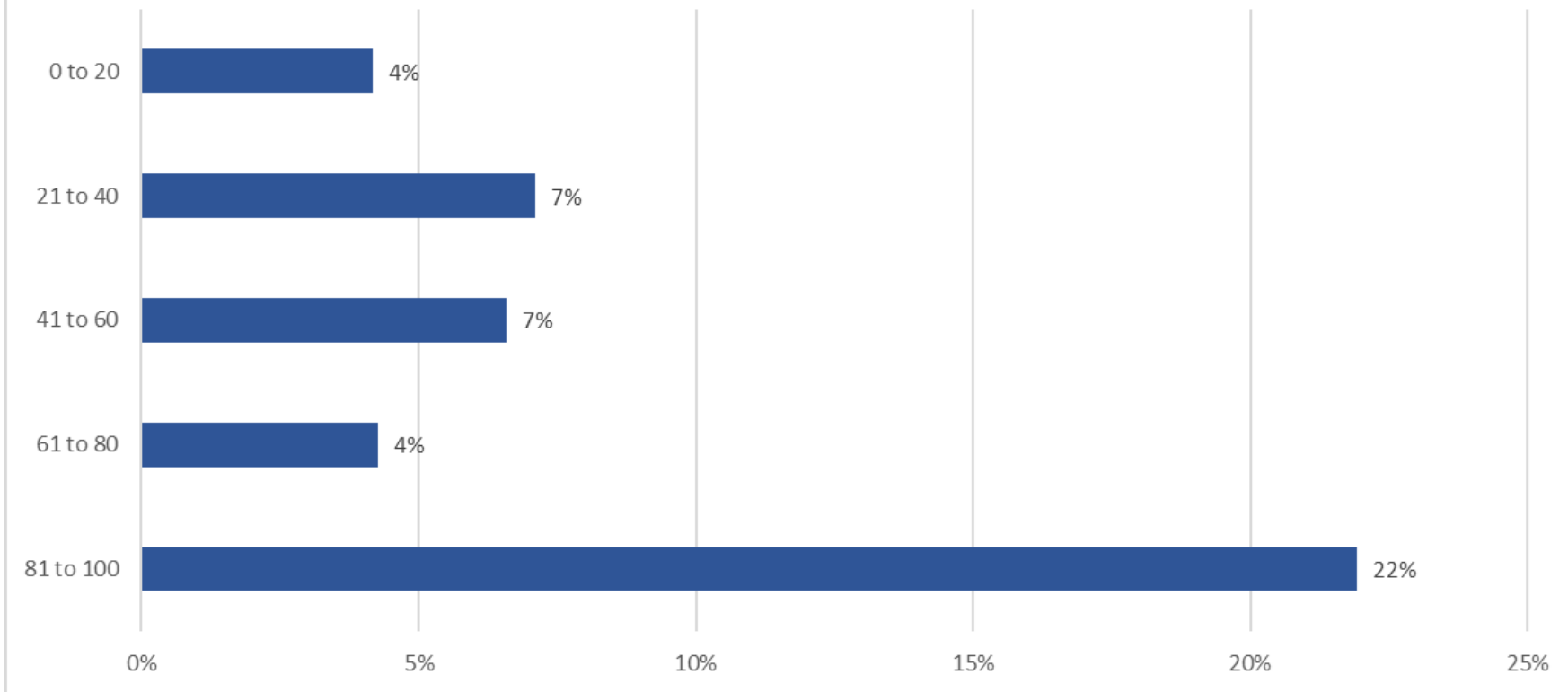
2050

1.46M

2.03M

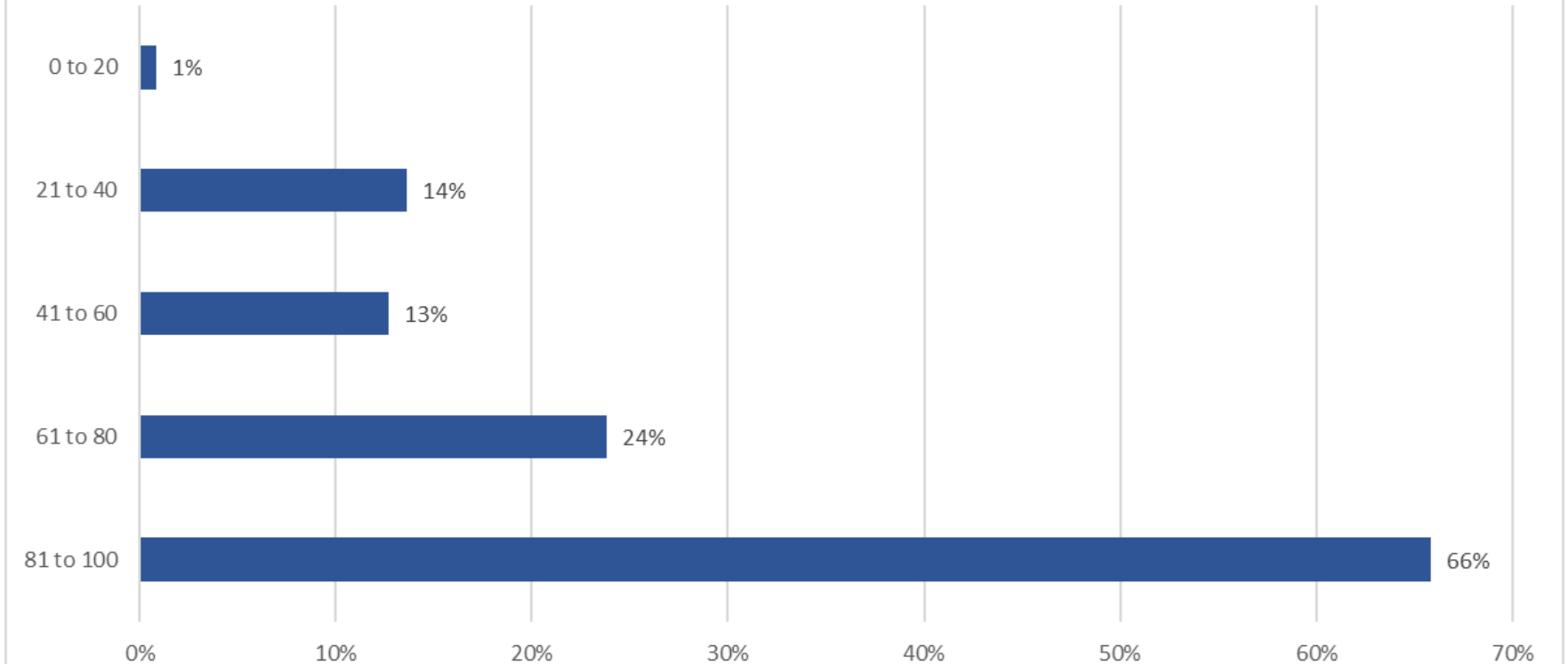
# Eastern Plains

Projected Population Change by Age Group, 2020-2030



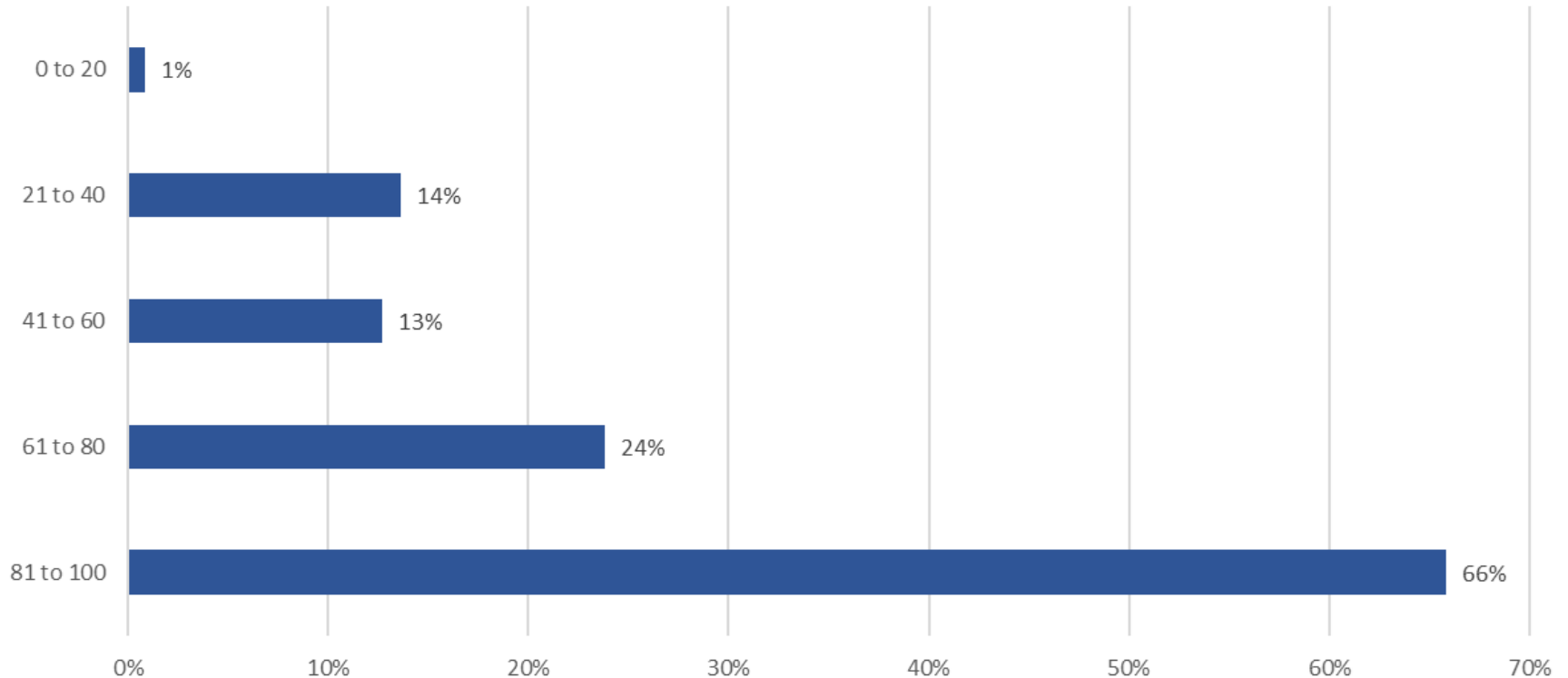
# Front Range

Projected Population Change by Age Group, 2020-2030



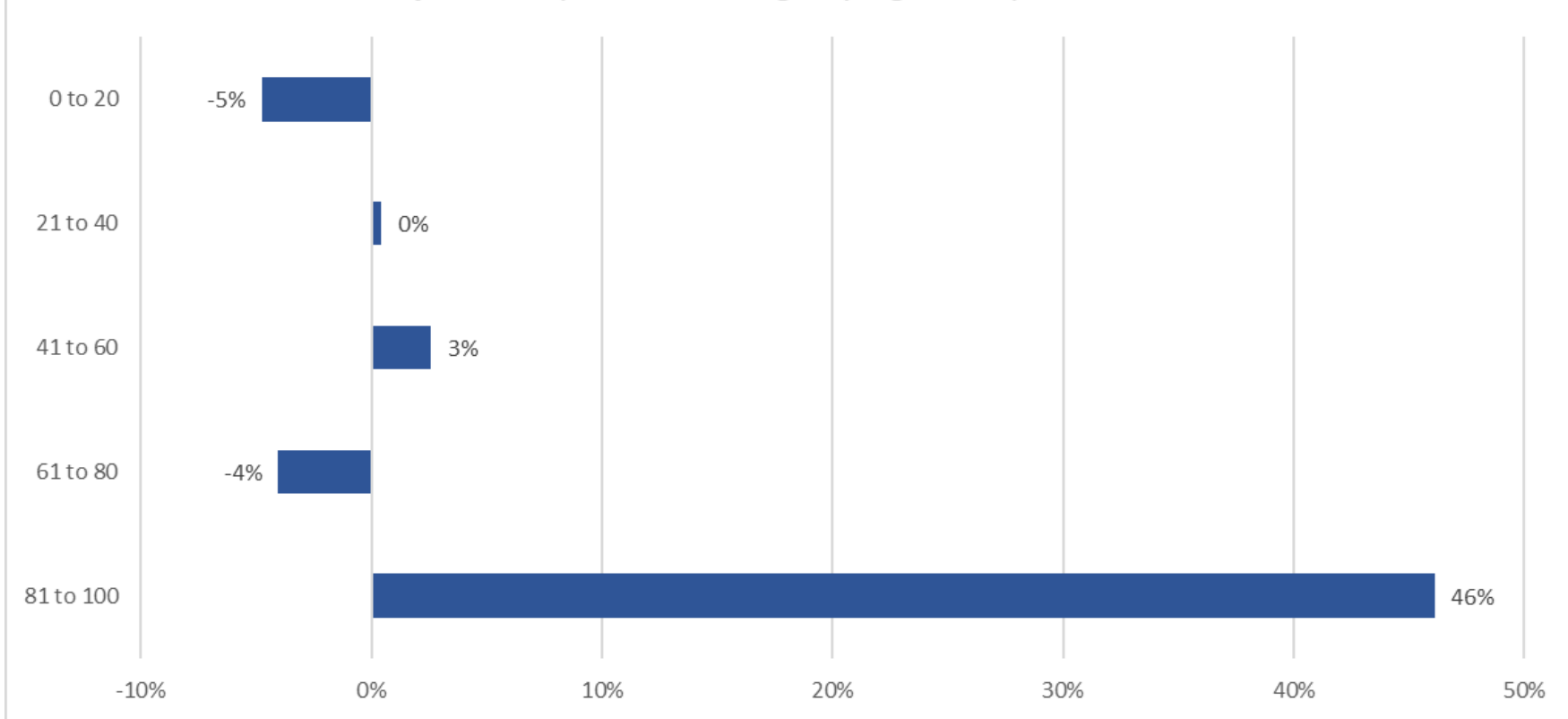
# Central Mountains

Projected Population Change by Age Group, 2020-2030



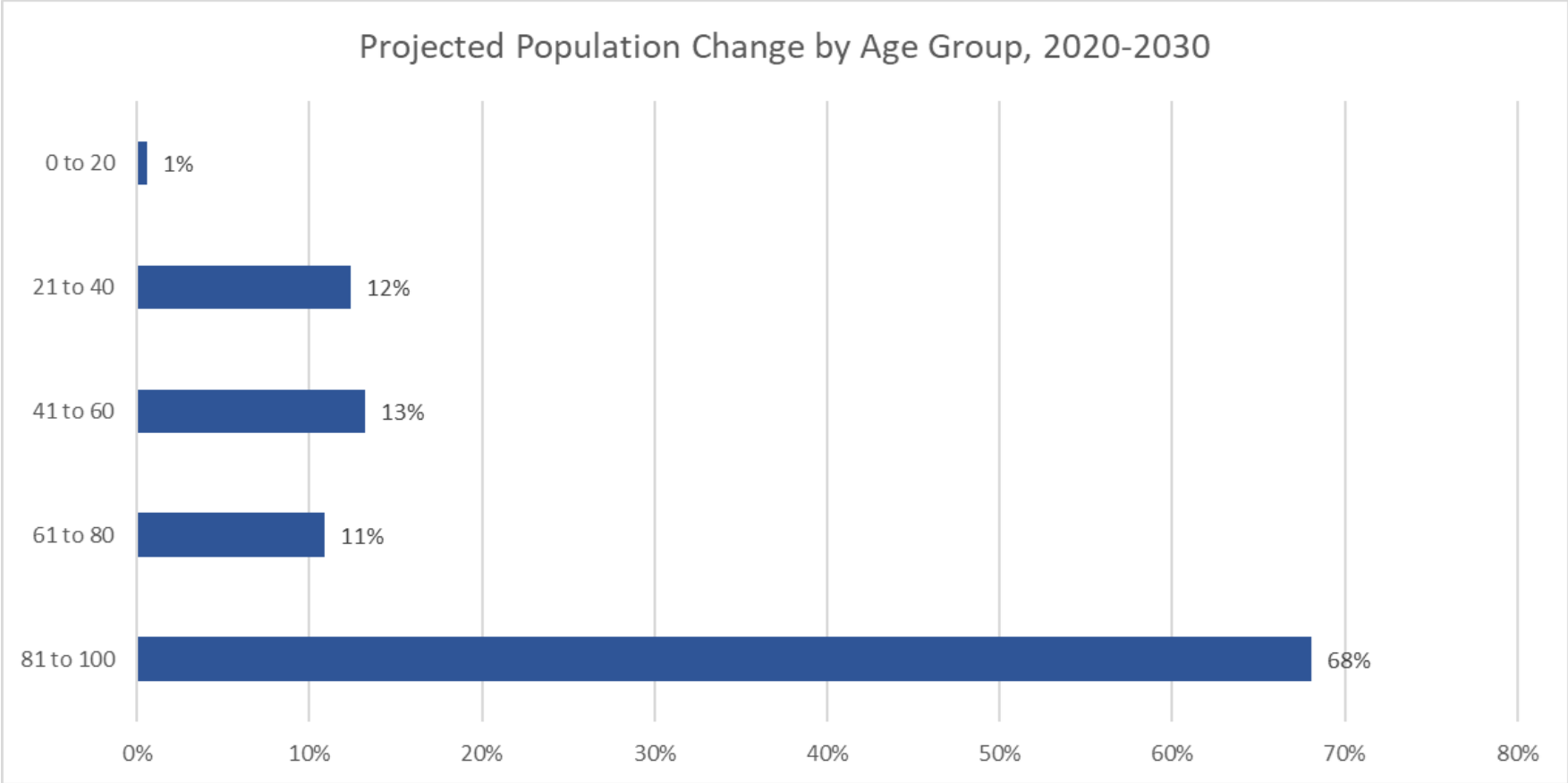
# San Luis Valley

Projected Population Change by Age Group, 2020-2030





# Western Slope



# Coloradans 50+ are an Economic Driver

State GDP \$153B or 40%

Jobs Supported \$1.7M or 44%

Wages and Salaries \$ 106B or 46%

State and Local Taxes \$10B or 36%

Colorado's 50+ population creates outsize economic impact and will drive economic growth for the next 30 years

# Demographics and Systemic Impacts

Direct Care Workforce

Healthcare and Wellness

Retirement Security

Family Caregiving

Health Disparities

Elder Abuse and Mistreatment

Mobility and Transportation

Supporting Older Workers

Age-Friendly Planning

Built Design and Accessibility

State Structure

Technology and Broadband

Long-Term Services and Supports

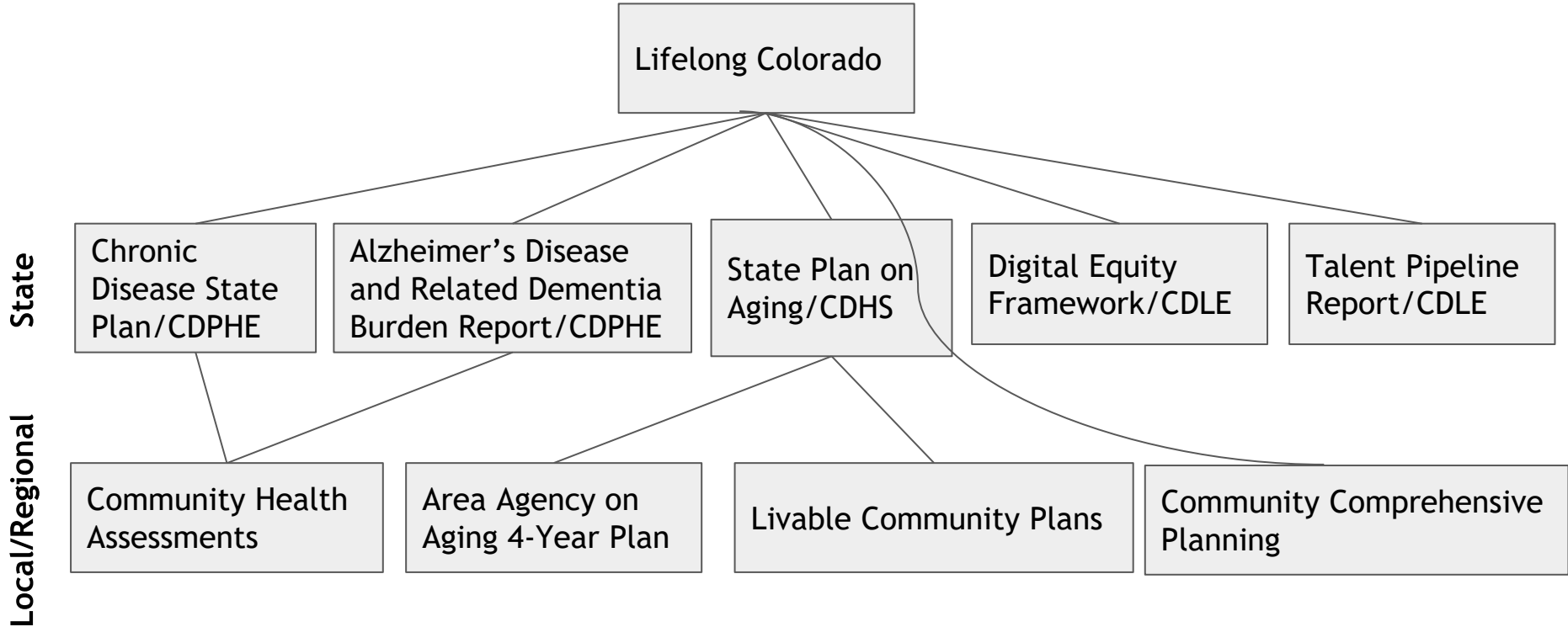
Chronic Disease Prevention



# Lifelong Colorado

**A Colorado well adapted for aging is one where  
all individuals can thrive - a Colorado for all**

# Lifelong Colorado: State, Regional, and Local Strategies



*Note: This is not meant to be comprehensive, just an illustration*

# Age-Friendly Communities and the Eight Domains of Livability

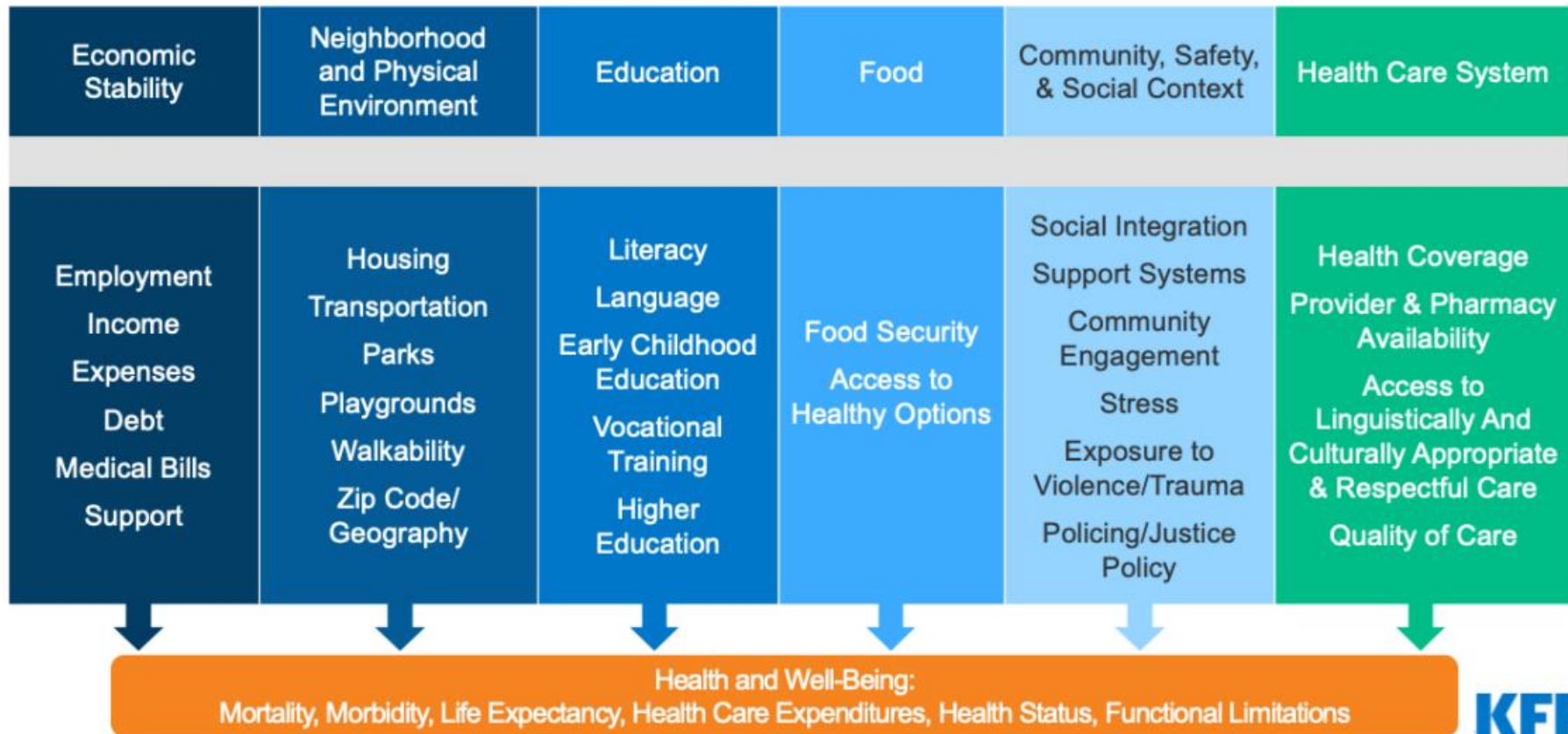
Equity across the lifespan supports outcomes in later life



# Maslow's Hierarchy of Needs



# Social Needs Impact Health Outcomes





# Colorado's AARP and Boomer Bond Communities

Arapahoe County

Arvada

Bennett

Boulder City and County

Broomfield City and County

Carbondale

Castle Pines

Centennial

Chaffee County

Colorado Springs

Dacono

Denver City and County

Eagle County

Edgewater

Englewood

Evans

Federal Heights

Frederick

Fruita

Garden City

Greeley

Idaho Springs

Jefferson County

La Junta

Lakewood

Larimer County

Las Animas

Littleton

Logan County

Longmont

Lyons

Manitou Springs

Pitkin County

Sheridan

Summit County

Thornton

Wheat Ridge

# How does a community get started?

1. Identify local leadership - local electeds, local agency staff, providers, community stakeholders

3. Develop an action and evaluation plan

5. Begin implementation, track progress, and update

2. Conduct community needs assessment and identify priorities from the eight domains

4. Submit plan for review

6. Engage with Lifelong Colorado communities, share best practices, and build regional partnerships



# Potential Funding Opportunities

## Potential Philanthropic Organizations

- Next Fifty Initiative
- Colorado Health Foundation
- AARP Community Challenge Grants

## Potential State Funding Opportunities

- **Energy Impact Assistance Fund:** Assessment design, planning, and potentially construction, Department of Local Affairs
- **FTA 5310 and FTA 5311 Grants:** Supporting mobility for persons with disabilities and older adults (e.g., mobility manager) and rural/small urban public transit, Department of Transportation
- **Health Promotion and Wellness Grants:** Chronic disease prevention and management, environmental/water, health disparities and community grants program, Department of Public Health and Environment
- **Housing Grants:** Affordable housing development, homelessness response, renovations of underutilized properties, Department of Local Affairs
- **Area Agency on Aging Grant Program:** Capital infrastructure investments, service/program enhancement, Department of Human Services

# Topline Takeaways

Your communities and our state are growing proportionally older

Don't panic! Older adults are an economic drivers and many of pieces that need increased coordination are already in place

Age-friendly and livable community efforts provide coordination and planning driven by volunteers, community-based organizations, and local leaders

Ask your local agencies and community-based organizations about your aging population

Get to know your Area Agency on Aging director and learn about opportunities and gaps

Many towns, cities, and counties are engaged in this work and they want to collaborate

Locally driven solutions that make sense in your community and state policies that provide support

Reach out to me and learn more about what is happening in your community, region, and state



[Jarett.hughes@state.co.us](mailto:Jarett.hughes@state.co.us)



**COLORADO**  
Governor Jared Polis  
Policy & Research

**November 29, 2021**