

## Pitkin County Roadmap to Reopening

Variance Request for partial relief from the provisions of the Governor Polis's Executive Order D 2020 044 SAFER AT HOME, and CDPHE Second Amended Public Health Order 20-28 SAFER AT HOME (the "State Orders").

### Purpose:

To develop a local plan for sustaining suppression of viral transmission associated with COVID-19 in an incremental fashion that slowly eases Stay At Home physical distancing strategies, prevents a resurgence of disease in the community, and allows our community to begin the social and economic recovery. [Pitkin County's Roadmap to Reopening](#) (see attachment A) has been created to provide an outline of these phases with more specific details outlined below.

### Background:

Through strict public health orders and excellent compliance by our community, Pitkin County has been very effective in suppressing the transmission of COVID-19. However, success fighting the virus has been accompanied by unprecedented social and economic disruptions. Pitkin County is seeking more flexibility to safely open portions of our tourist based economy based on local conditions, and the overarching goal of protecting public health and safety. Pitkin County will continue to maintain public health orders, testing and contact tracing pursuant to the attached suppression plan, and will not burden public health resources in other parts of the state. The plan has been developed based on, Resolve to Save Lives [COVID-19 Playbook](#), and Johns Hopkins [Plan for Case Finding and Contact Tracing in the US](#).

Pitkin County's Roadmap to Reopening establishes three phases of reopening with five criteria to be met prior to movement between phases:

## 5 Criteria that must be met to move to the next phase



1

Pitkin County sees a sustained decrease in the number of new COVID-19 cases for at least 14 days.



2

Hospitals are safely able to treat patients without resorting to crisis standards of care.



3

Testing is performed for all people with symptoms consistent with COVID-19 infection.



4

Active and timely monitoring can be accomplished for all COVID-19 cases and their contacts.



5

Clear protocols are in place that require social distancing and assist with case identification.

**Criteria 1: Disease prevalence is consistently reduced as a result of local containment measures.**

Metrics: Pitkin County sees a stable or sustained decrease in the number of new COVID-19 cases for at least 14 days:

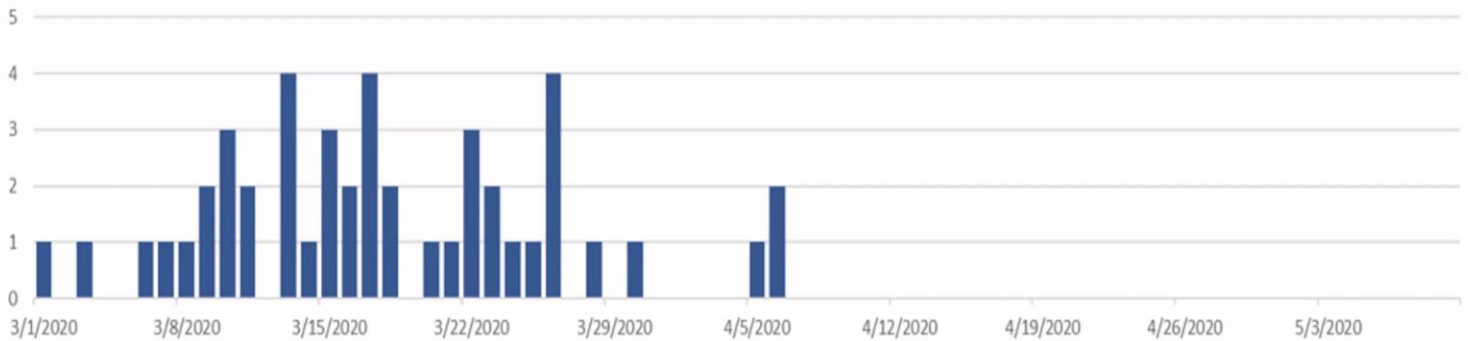
Measures:

1. Number of new cases by onset and relatedness on new cases
2. [Symptom Tracker Trends](#) for in the community
3. Number of respiratory tent and emergency department patients
4. New cases among healthcare workers (hospital, PCPs, first responders)

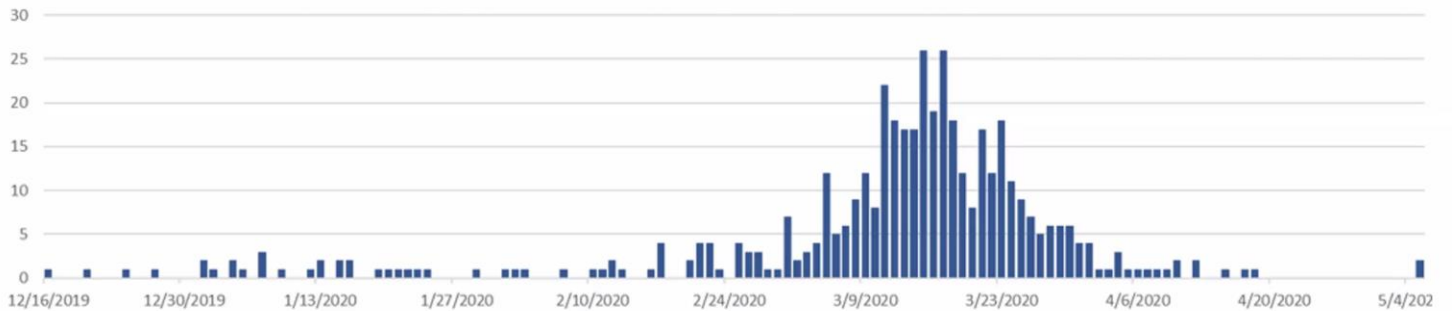
\*Note Pitkin County continues to work with Aspen Valley Hospital and local doctors to refine our metrics to ensure as accurate a picture as possible of the ongoing prevalence and infection trends in Pitkin County.

Status: Pitkin County has seen a decrease in the number of new COVID-19 cases for at least 14 days. The following three graphs show that the number of new cases by onset date has decreased since March, and few new cases have been reported by onset date since the first week in April. Similarly, Pitkin County's symptom tracker data shows a similar pattern with the prevalence of COVID symptoms greatly decreasing from mid-March, with almost none being reported since the first week in April. Finally, our adjoining counties are also experiencing low numbers of new infections.

Confirmed Cases by Onset Date



Self-Reported Symptoms by Onset Date



	Total Cases	Total	New Cases	New Daily Cases	Trend in New Cases
	Reported	Deaths	12-May	7-Day Ave	vs 7-Day Ave
<b>Pitkin County</b>	54	2	0	0	stable
<b>Eagle County</b>	561	8	2	2	stable
<b>Garfield County</b>	111	2	8*	2	stable
<b>Colorado</b>	20,157	1,009	278	399	decreasing

\*Reporting changes, as opposed to new cases with recent onset

**Criteria 2: Hospital capacity remains adequate to address COVID-19 cases as well as other medical issues.**

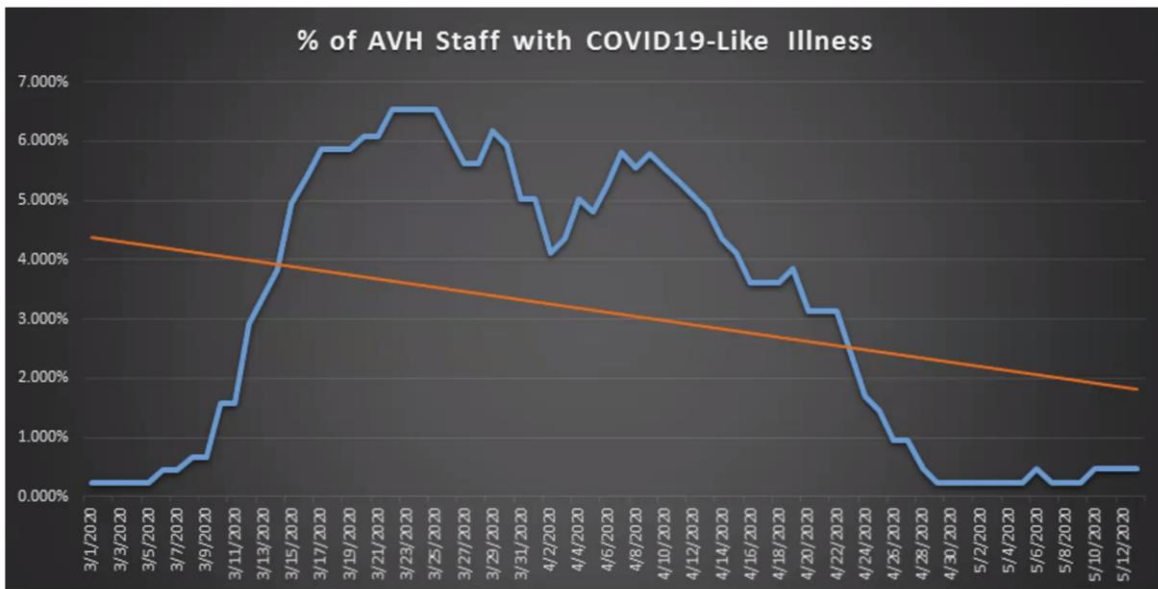
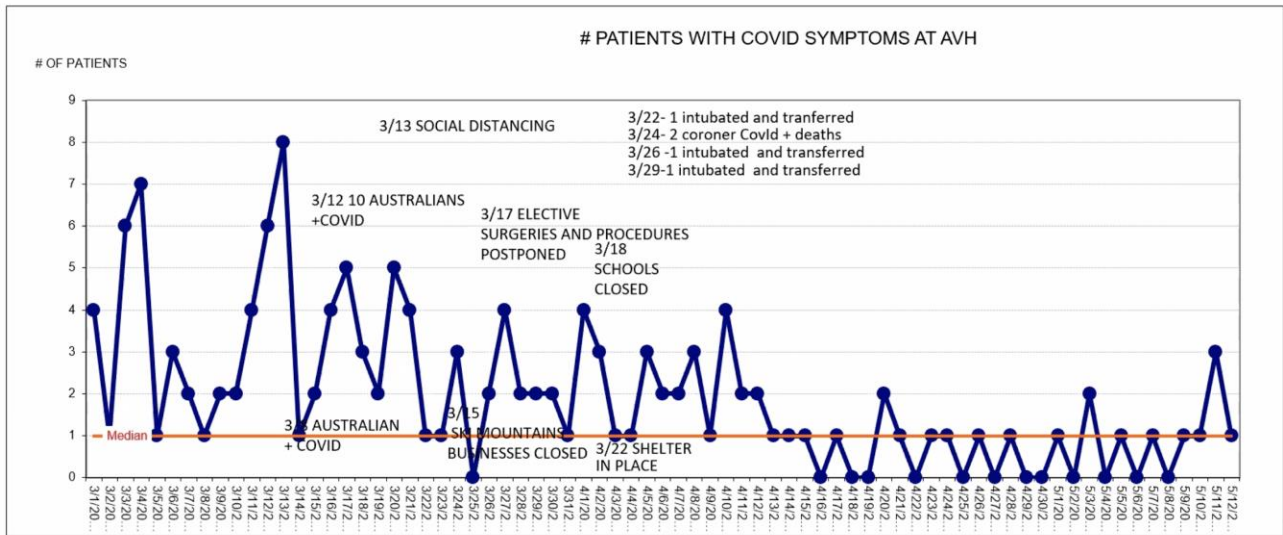
Metrics: Hospitals are safely able to treat patients without resorting to crisis standards of care

1. Overall hospital census (including ICU/PCU)
2. Hospitalizations for COVID-19
3. Hospital trends in adjacent counties and regional alternative care sites

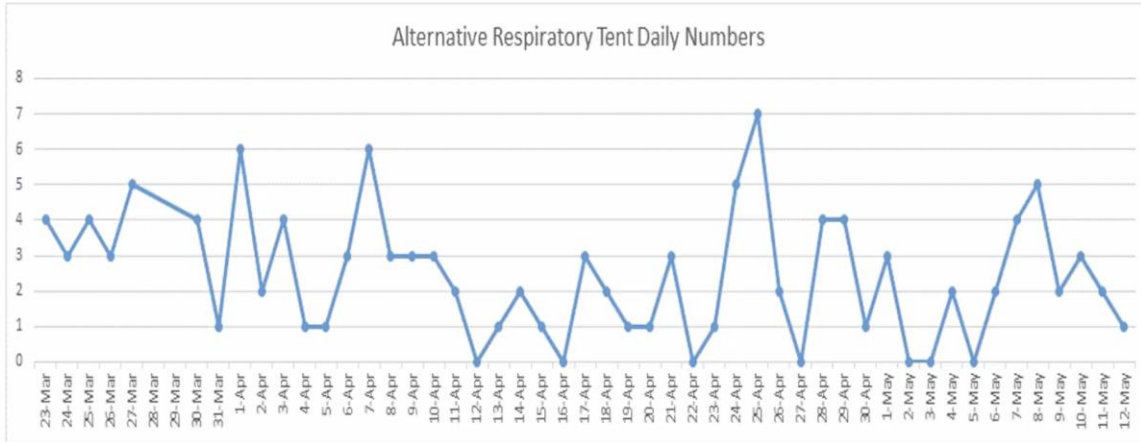
\*Note Pitkin County continues to work with Aspen Valley Hospital and local doctors to refine our metrics to ensure as accurate a picture as possible of the ongoing prevalence and infection trends in Pitkin County.

Status: The number of patients at Aspen Valley Hospital with COVID-19 symptoms has decreased and been consistently low since March. Likewise, infection rates among hospital staff have decreased and remained low since March (see tables below). Aspen Valley Hospital supports Pitkin County's Roadmap to Reopening and the criteria established to move between phases. Aspen Valley Hospital has the capacity and is not experiencing any measurable surge in COVID suspected cases or positive test results.

## # OF PATIENTS AT AVH WITH COVID SYMPTOMS



# # OF DAILY VISITS TO THE AVH RESPIRATORY TENT



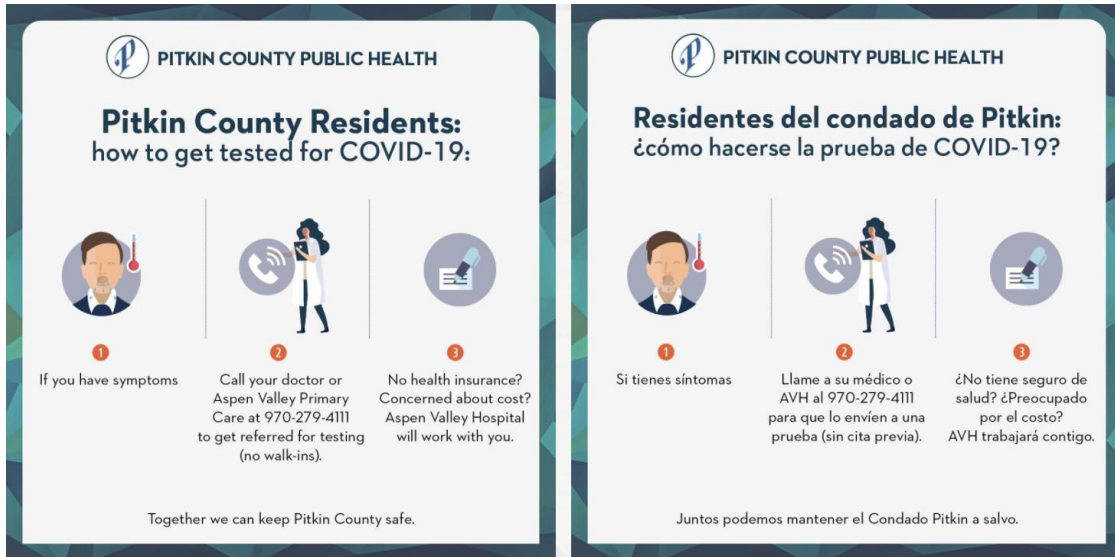
### Criteria 3: There is capacity to test all people with symptoms of COVID-19.

Metrics: Testing is performed for all people with symptoms consistent with COVID-19 infections

1. AVH pre-op/OB, staff and community PCR testing positivity rates
2. Testing of symptomatic patients routinely available within 24 hours. Testing capacity at 150 tests a day per 100,000 in population.
3. Local, State and/or private lab turnaround times

\*Note Pitkin County continues to work with Aspen Valley Hospital and local doctors to refine our metrics to ensure as accurate a picture as possible of the ongoing prevalence and infection trends in Pitkin County.

Status: In partnership with Aspen Valley Hospital, Pitkin County currently has PCR testing capacity for up to 30 patients a day (adequate for a population of 20,000 based on 150 daily tests per 100,000 population). COVID-19 testing is available to all symptomatic people regardless of whether they have a primary care physician or ability to pay. We continue to work with Aspen Valley Hospital to increase capacity to at least 50-60 tests a day adequate to serve a population of 33,000 to 39,000. Currently all PCR tests have to be submitted to labs with 24-48 hour turnaround times. Pitkin County has confirmed an order for 2,000 rapid PCR tests to be performed by AVH that will reduce turnaround time for results to a couple hours. We are also working with our local hospital to conduct 5,400 tests of targeted populations (in addition to PCR tests of symptomatic individuals) between June and December to proactively seek out asymptomatic individuals and isolate the virus.



**Criteria 4: Active and timely monitoring can be accomplished for all COVID-19 cases and their contacts.**

Metrics: Active and timely monitoring can be accomplished for all COVID-19 cases and their contacts

1. Isolation orders can be delivered within 6 hours of case report
2. Staffing is in place to investigate, trace and quarantine all contacts
3. Follow-up monitoring and isolation/quarantine support is available

Status: Pitkin County has set a goal of having a minimum of 30 contact tracers per 100,000 in population for the next 18 months as recommended by the National Association of Local Public Health Officials for COVID-19 response. Pitkin County has used the time during our Public Health Orders to build our contact tracing capacity from 0.5 FTE to 11 trained contact tracers (existing county and municipal employees). This provides capacity to serve a population up to 25,000. The County is planning to build contact tracing capacity for a population of 39,000 for the next 18 months to accommodate our full time, part-time, and visitor populations. We will hire/contract a core of full time dedicated employees for contact tracing, supported by existing cross trained employees in the event of a surge in cases.

# Four essential actions



**Criteria 5:** Clear protocols are in place that require physical distancing and assist with case identification

- Older adults and individuals with underlying medical conditions that are at increased risk are educated to stay home
- Employee screening and safety protocols are in place for all employers
- Enforcement capacity and process is clear

Status: [Pitkin County's Public Health Order](#) provides for protection of vulnerable populations inline with state orders and has established [Safer at Home Guidance for Older Adults](#). Similarly, the County has a [COVID-19 Business Safety Plan Checklist](#) that all businesses must complete and comply with to be open for business. Finally, in addition to Pitkin County's COVID-19 Business Safety Plan Checklist, the county has sector specific guidelines for [construction](#), and is working on guidelines for lodging, restaurants, and outdoor recreation which will be complete prior to May 27th.

Pitkin County's [Roadmap to Reopening](#) identifies specific phases that the County will progress through based on continuing to meet the five criteria. A minimum of four weeks between phases will be observed to allow two generations of the SarsCoV-2 virus to propagate and be detected through our testing program. We anticipate moving to Phase 2 of our Roadmap to reopening on May 27th. To implement Pitkin County's Roadmap to Reopening we requests consideration of the following information and specific variance requests:

**Businesses** - Permit opening of non-critical, non-essential, non-governmental businesses in Pitkin County, conditional on ability to meet all physical distancing requirements.

- All businesses are required to complete a [COVID-19 Business Safety Checklist](#) prior to re-opening, which
  - Provides clear expectations for employees and customers, including
    - Protecting employee health
    - Preventing crowds
    - Ensuring effective distancing
    - Increasing sanitization
    - Preventing unnecessary contact
    - Reducing exposures in transportation
    - Includes symptom screening for employees
  - Required regardless of being open to the public or not
  - Will be posted physically on site
  - Is a tool for enforcement if violation complaints are received
- Telework is still highly encouraged, especially for employees 60 years of age or older and/or employees with underlying health conditions.
- Businesses that are deemed critical or governmental as outlined in the state public health order, will still be permitted to operate as indicated.
- Where applicable or available, Pitkin County will use guidance that has been developed and implemented for the Safer At Home Order. Where not available or Pitkin County's order is more permissible or more strict than the State's, guidance will be developed that ensures physical distancing requirements outlined above are met.

**Gatherings** - Each phase progressively expands the number of people permitted in gatherings as follows:

- **Phase 1** - 10
- **Phase 2** - 25-50 with some businesses adhering to occupancy levels, restaurants and lodging capacity will be determined by physical distancing guidelines established by the county that will slowly reintroduce these activities. Outdoor venues will also be promoted as a less riskier environment than indoor venues.
- **Phase 3** - 250 and potentially higher if physical distancing requirements are met and depending on venue location or size. Outdoor venues will also be promoted as a less riskier environment than indoor venues.

Phase 2 - Pitkin County's plan allows multiple groups of the allowed gathering size (25-50 Phase II and 250 Phase III) as long as the groups are separated by 20 feet and individuals and the groups meet the county's physical distancing requirements.

**Specific Variance Requests from the Safer At Home Order**



### **1. Section I(A): Safer at Home.**

The provision directs that all individuals should stay at home and avoid unnecessary travel. It also requires individuals living in shared or outdoor spaces to comply with the state's physical distancing requirements and encourages them to not leave their residences only for necessary activities.

Conflict/Variance Requests:

Phase 1 - Pitkin County's plan does not require physical distancing among members of a household, and allows residents to leave their homes for any permissible activities.

### **2. Section I(C): Gathering Sizes.**

Under this provision, all public and private gatherings are limited to no more than 10 individuals.

Conflict/Variance Requests:

Phase 2 - Pitkin County anticipates moving to phase 2 of our Roadmap to Reopening on May 27th, where we propose increasing the size of gatherings from 10 to between 25 and 50. In addition, capacity levels will be evaluated for places of public accommodation (e.g. restaurants and lodging), provided that physical distancing requirements are met. Outdoor venues will also be promoted as a less riskier environment than indoor venues.

Phase 3 - Pitkin County may further increase the gathering size to 250 or further increase capacity limits for some gatherings provided that physical distancing requirements are met. Outdoor venues will also be promoted as a less riskier environment than indoor venues.

### **3. Section I(G): Travel and Public Transit.**

The provision requires the use of public transit only for limited purposes (to perform necessary activities).

Conflict/Variance Requests:

Phase 2 - Pitkin County's plan allows public transit for any permissible purpose under the county's order. Current transit authorities in Pitkin County prohibit or discourage non-essential use. All riders are required to wear face coverings by each transit authority already and ventilation has been increased.

### **4. Section I(H): Local and Personal Public Recreation.**

This provision limits groups participating in recreational activities to no more than 10 individuals. It limits personal training and classes and sharing equipment to only 4 unrelated members. It also closes playgrounds and playground equipment.

Conflict/Variance Requests:

Phase 2 - When transitioning to phase 2, Pitkin County anticipates opening playgrounds and playground equipment as long as signage is posted to reinforce distancing requirements and hand sanitizing. Outdoor venues will also be promoted as a less riskier environment than indoor venues.

#### **5. Section II(A): Business Requirements.**

This provision closes certain places of public accommodation to ingress, egress, use, and occupancy to members of the public, including restaurants and bars, gyms, and movie and performance theaters.

Conflict/Variance Requests:

Phase 2 - When transitioning to phase 2, Pitkin County anticipates opening restaurants and bars for dine-in and on-premise consumption, including outdoor seating, as long as physical distancing and cleaning requirements are met. Outdoor venues will also be promoted as a less riskier environment than indoor venues.

Conflict/Variance Requests:

Phase 2 - Pitkin County's Road Map allows places of public accommodation such as places of worship, museums, gyms, movie and performance theaters, concert halls, or music venues to be open as long as limits on gathering sizes, strict physical distancing and cleaning requirements are met. However, limitations on gathering sizes will effectively keep many of these venues closed until phase III is reached.

#### **6. Section II(C): Specific Rules for Places of Public Accommodation.**

This provision allows only delivery or walk up service for places of public accommodation, but limits the number of people that may be in such a place for purposes of pickup and does not allow any on-premises consumption, not even in special outdoors areas.

Conflict/Variance Requests:

Phase 2 - When transitioning to phase 2, Pitkin County anticipates opening restaurants and bars for dine-in and on-premise consumption, including outdoor seating, as long as physical distancing and cleaning requirements are met. Outdoor venues will also be promoted as a less riskier environment than indoor venues.

#### **7. Section II(D): Noncritical Retail.**

This provision limits non-critical retail to delivery, window, walk-up, drive through, drive up, or curbside service, but does not seem to allow flexibility beyond that (including opening stores to members of the public).

Conflict/Variance Requests:

Phase 2 - On May 27th, Pitkin County's plan allows in-person visits to stores, as long as limits on numbers of individuals and strict physical distancing requirements are met. In instances where the square footage of a retail business cannot accommodate the gathering size permitted while maintaining the minimum of 6 feet separation between employees and customers, a reduced number for entry will be set.

# Pitkin County Roadmap to Reopening

## 5 Commitments of Containment:



1  
I will maintain 6 feet of social distance.



2  
I will wash my hands often.



3  
I will cover my face in public.



4  
I will stay home when I am sick.



5  
I will get tested immediately if I have symptoms.

## 5 Criteria that must be met to move to the next phase



1  
Pitkin County sees a sustained decrease in the number of new COVID-19 cases for at least 14 days.



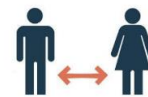
2  
Hospitals are safely able to treat patients without resorting to crisis standards of care.



3  
Testing is performed for all people with symptoms consistent with COVID-19 infection.



4  
Active and timely monitoring can be accomplished for all COVID-19 cases and their contacts.



5  
Clear protocols are in place that require social distancing and assist with case identification.

Activities	Current Pitkin County Public Health Order Through May 8th	Phase 1 Reopening	Phase 2 Reopening	Phase 3 Reopening
		Requires that criteria 1-5 be met and maintained. Beginning <b>May 9th</b> align with Safer at Home CO State Order	If Criteria 1-5 are met and maintained, begins on <b>May 27th</b> . Specific requirements pending further development and guidance.	If Criteria 1-5 are met and maintained, <b>TBD at least 4 weeks</b> after "Phase 2" starts. Specific requirements pending further development and guidance.
EVERYONE				
Gathering Size	5	10	25-50	250
Face coverings	Recommended in Pitkin County, required with exceptions in Aspen	Required in all public buildings, businesses, and outside if you go within 6 feet of others for longer than 10 minutes.	Guidance to be determined	Guidance to be determined
Travel	Limit travel to essential trips	Limit travel to essential trips, recreate only within RFV	Guidance to be determined	Guidance to be determined
COMMUNITY				

<b>Non-Resident homeowners</b>	Must quarantine for 14 days upon arrival	Must follow 5 Commitments of Containment	Guidance to be determined	Guidance to be determined
<b>Visitors</b>	Not permitted	Not permitted	Reopen with guidance to be determined	Reopen with guidance to be determined
<b>Older Adults (60+)</b>	<u>Encouraged to avoid social contact, gatherings, and in-person workplace</u>	<u>Pitkin County Safer at Home Guidance for Older Adults</u>	Guidance to be determined	Guidance to be determined
<b>Higher Risk Individuals (with pre-existing conditions)</b>	<u>Encouraged to avoid social contact, gatherings, and in-person workplace</u>	<u>Pitkin County Safer at Home Guidance for Higher Risk Individuals</u>	Guidance to be determined	Guidance to be determined

## EDUCATION

All reopenings require submission of a [Pitkin County Business Safety Plan Checklist](#)

<b>Childcare</b>	<u>Reopen with Home based care only</u>	<u>Open if compliant with Pitkin County COVID-19 Business Safety Plan (linked above) and State of Colorado Safer at Home order (linked here)</u>	Guidance to be determined	Guidance to be determined
<b>K-12 Education + Camps</b>	Distance learning only	<u>Distance learning only</u>	Reopen with guidance to be determined	Guidance to be determined

## INSTITUTIONS

All reopenings require submission of a [Pitkin County Business Safety Plan Checklist](#)

<b>Senior Centers</b>	Essential Personnel only Visitation is not permitted	Essential Personnel only Visitation is not permitted	Essential Personnel only Visitation is not permitted	Essential Personnel only Visitation is not permitted
<b>Places of Worship</b>	Closed for in-person gatherings, may offer online services	<u>May hold drive-in services and broadcasts, if compliant with Pitkin County COVID-19 Business Safety Plan (linked above) and State of Colorado Safer at Home order (linked here)</u>	Guidance to be determined	Guidance to be determined
<b>Local Government</b>	Open for Essential Services only	<u>Open in alignment with State of Colorado Safer at Home order</u>	Guidance to be determined	Guidance to be determined
<b>Museums</b>	Closed	Closed	Guidance to be determined	Guidance to be determined

## BUSINESS

All reopenings require submission of a [Pitkin County Business Safety Plan Checklist](#)

<b>Essential Business</b>	Open with social distancing protocols	<u>Open if compliant with a Pitkin County COVID-19 Business Safety Plan Checklist (to be completed by May 23rd and linked above) and State of Colorado Safer at Home Order (linked here)</u>		
<b>Retail and businesses not listed below</b>	In-person operations closed	<u>Open if compliant with Pitkin County COVID-19 Business Safety Plan Checklist (linked above) and State of Colorado Safer at Home Order (linked here)</u>	Guidance to be determined	Guidance to be determined

<b>Offices and Professional Services</b>	In-person operations closed	<u>Open if compliant with Pitkin County COVID-19 Business Safety Plan Checklist (linked above) and State of Colorado Safer at Home Order (linked here)</u>	Guidance to be determined	Guidance to be determined
<b>Lodging (including, but not limited to hotels, lodges, short-term, 30-day or less rentals)</b>	Not permitted	Open only for local residents, essential business, medical care, & emergencies and if compliant with Pitkin County COVID-19 Business Safety Plan Checklist (linked above)	Reopen with guidance to be determined	Reopen with guidance to be determined
<b>Restaurants &amp; Bars</b>	Take-out and delivery only No in-house dining No patio dining	No change. Take-out and delivery only	Open if compliant with Pitkin County COVID-19 Business Safety Plan Checklist	Open if compliant with Pitkin County COVID-19 Business Safety Plan Checklist
<b>Elective, preventative medical care</b>	No elective medical care	<u>Open if compliant with Pitkin County COVID-19 Business Safety Plan (linked above) and State of Colorado Safer at Home Guidance (linked here)</u>	Guidance to be determined	Guidance to be determined
<b>Permitted Construction</b>	<u>Can continue with an approved Pitkin County COVID-19 Safety Plan as of April 27th</u>	<u>Can continue with an approved Pitkin County COVID-19 Safety Plan</u>	Guidance to be determined	Guidance to be determined
<b>Landscaping and Non-Permitted Construction</b>	<u>Can continue if meeting Pitkin County COVID-19 Business Safety Plan Requirements</u>	<u>Open if compliant with Pitkin County COVID-19 Business Safety Plan</u>	Can continue if meeting Pitkin County COVID-19 Business Safety Plan Requirements	Can continue if meeting Pitkin County COVID-19 Business Safety Plan Requirements
<b>Special events</b>	No	Only if total number of people on site is 10 or under and compliant with Pitkin County COVID-19 Business Safety Plan (linked above)	Reopen with guidance to be determined and according to allowed group size	Reopen with guidance to be determined and according to allowed group size
<b>Real estate</b>	No showings	<u>In person showings, no open houses, if compliant with Pitkin County COVID-19 Business Safety Plan Checklist (linked above) and following State of Colorado Safer at Home Guidance (linked here)</u>	Guidance to be determined	Guidance to be determined
<b>Personal services (hairstylists, salons, personal training, etc.)</b>	No	<u>Open if compliant with Pitkin County COVID-19 Business Safety Plan Checklist (linked above) and State of Colorado Safer at Home Order (linked here)</u>	Guidance to be determined	Guidance to be determined

## RECREATION

All reopenings require submission of a [Pitkin County Business Safety Plan Checklist](#)

<b>Playgrounds and activities with high touch equipment</b>	Not permitted	Not permitted	Reopen with guidance to be determined	Guidance to be determined
---	---------------	---------------	---------------------------------------	---------------------------