



**COLORADO**  
Office of Early Childhood  
Department of Human Services

# *Colorado Office of Early Childhood*

Colorado Counties, Inc. New Commissioner Orientation  
January 11, 2017



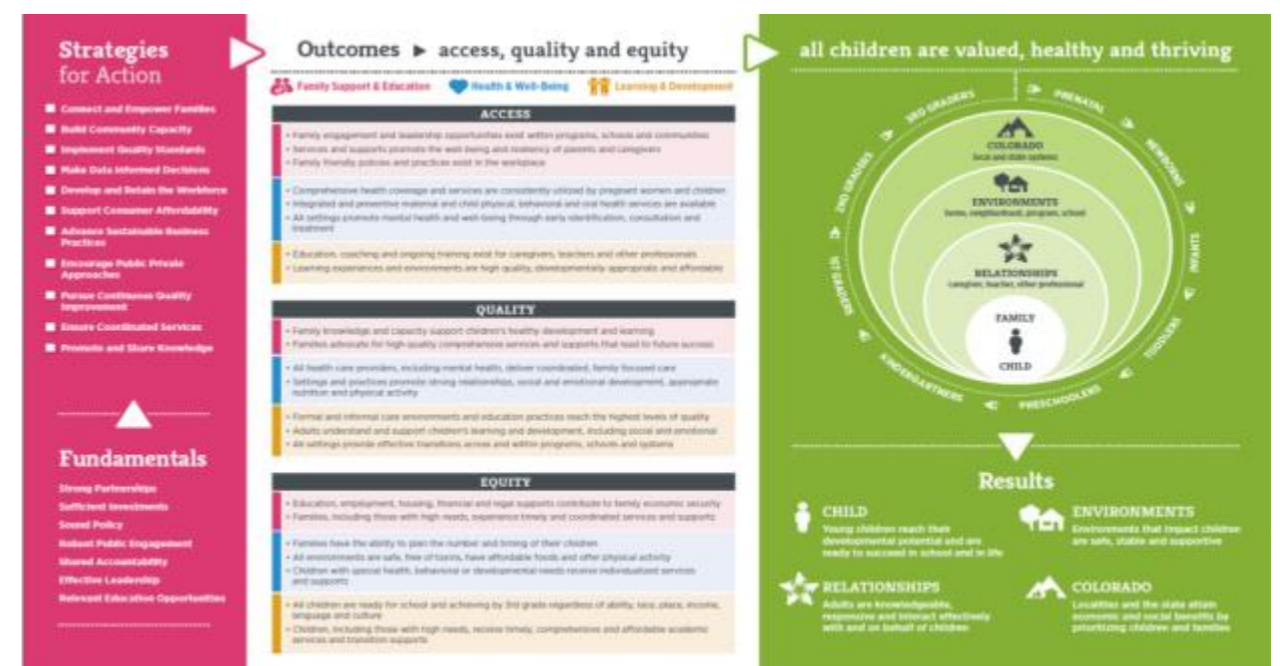
# *Purpose, Structure and Goals*

# Purpose

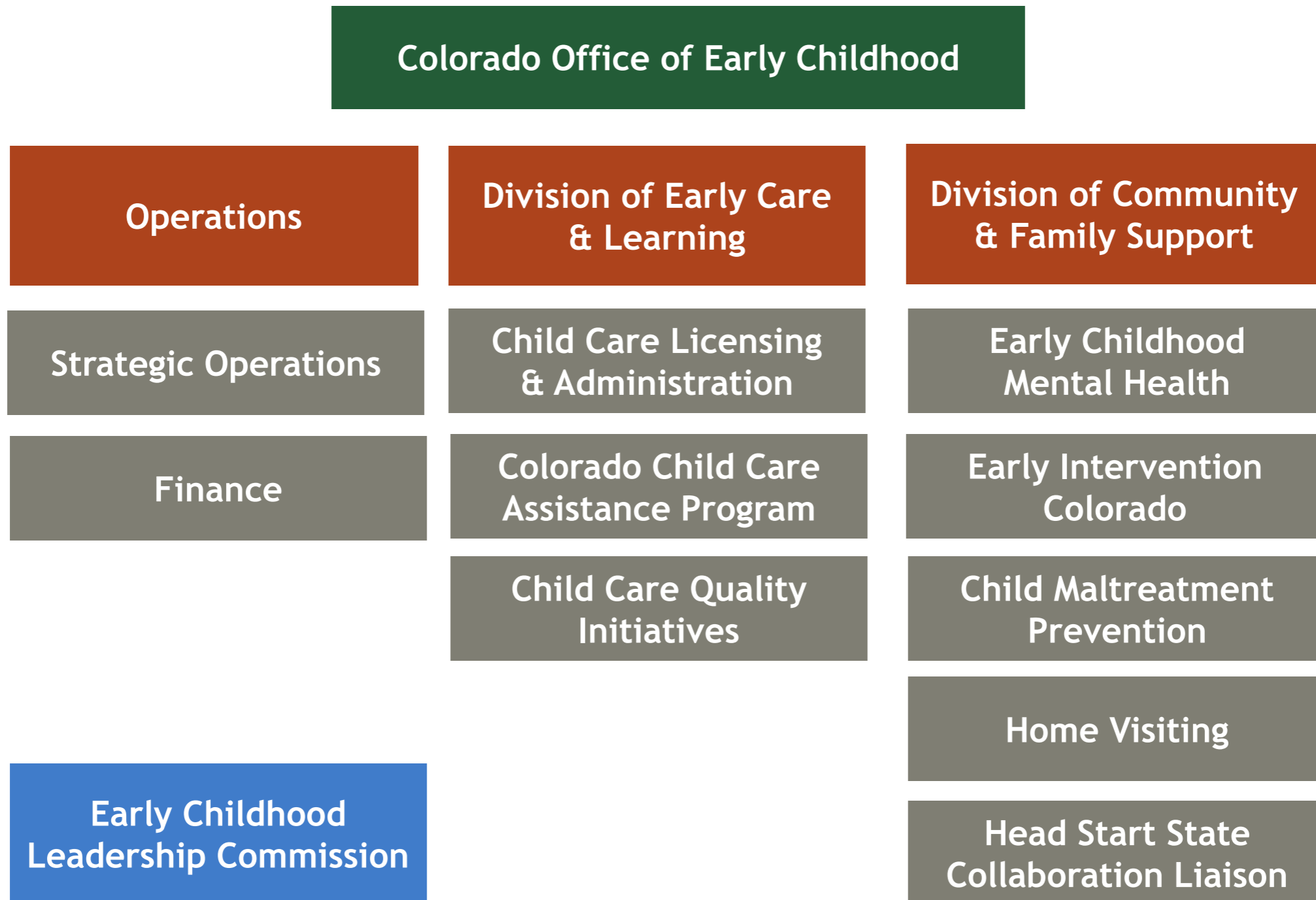
The Office of Early Childhood provides **collaborative leadership to align resources** for children, families, and early childhood professionals to best prepare Coloradoans for future success, through **access to coordinated and quality early childhood programs and family supports**.

Utilize a **two-generation approach** to support both children and their parents/caregivers.

Aligned with the goals set forth in the **Early Childhood Colorado Framework** to ensure all children are valued, healthy and thriving.



# Structure



# Importance of Quality Early Childhood Programs

- The **first five years** set the foundation of brain architecture
- **1 in 4** children in Colorado enter kindergarten unprepared to keep pace with their peers
- Quality early childhood programs
  - help to break the cycle of poverty
  - allow children to achieve higher levels of education
  - reduce rates of incarceration
  - reduce the need for future services

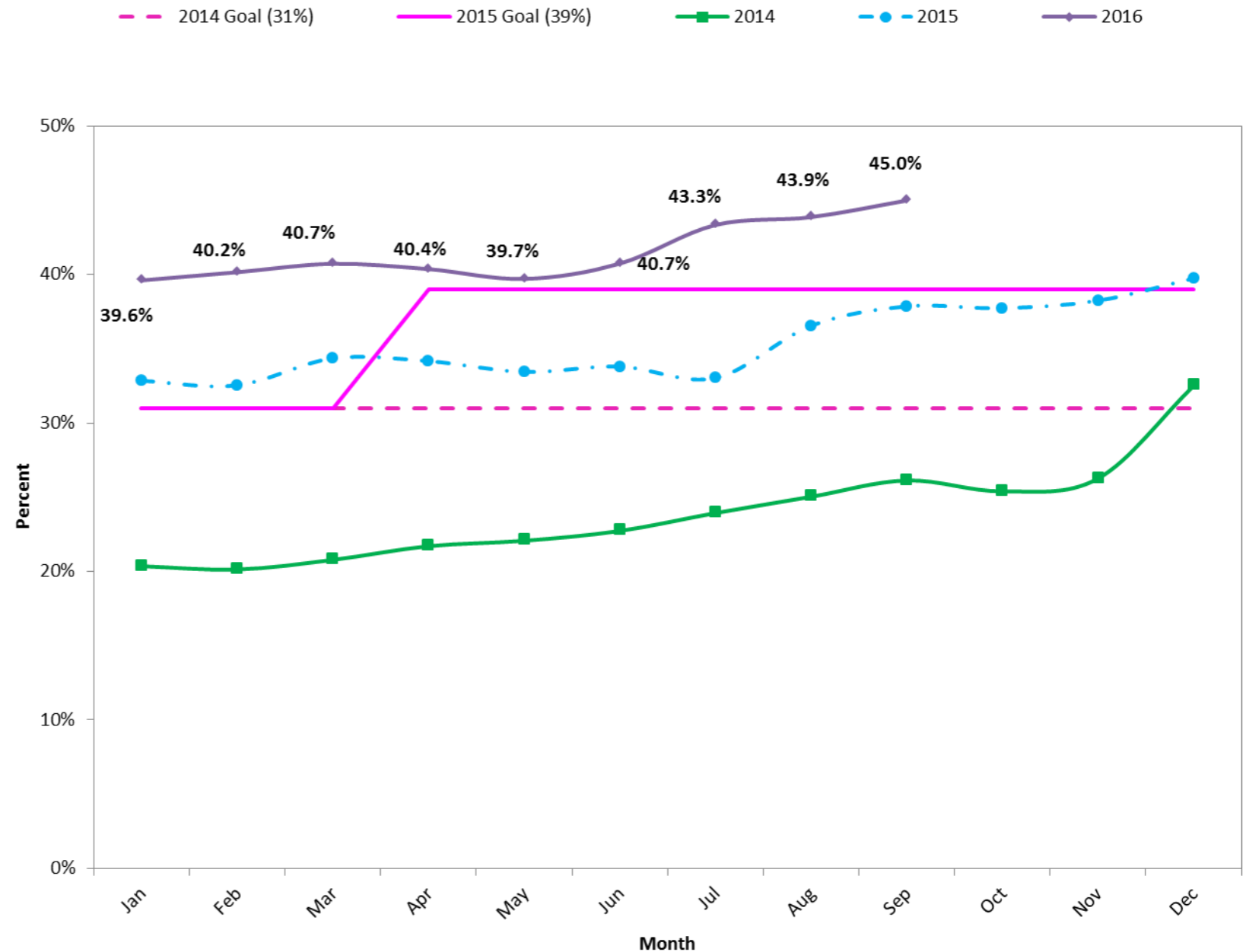


# Wildly Important Goal SFY 2015-2016

## Maximize Quality in Subsidized Care

❖ **Numerator:** Total number of children, under five years old, who utilized CCCAP at a child care facility with a current quality rating greater than Level Two at least once during the given month

❖ **Denominator:** Total number of children, under five years old, who utilized CCCAP at a child care facility at least once in the given month



# *Wildly Important Goals SFY 2016-2017*

## **Increase access to high quality early care and learning programs for all families, despite income level.**

- By June 30, 2017, the Office of Early Childhood will increase the percentage of Colorado communities with access to slots for Colorado Child Care Assistance Program subsidies in a high quality facility (Colorado Shines Levels 3-5) from 25.4% to 33.0%

## **Support statewide efforts to prevent child maltreatment.**

- The Office of Early Childhood is releasing Colorado's first statewide child maltreatment prevention strategic agenda.
- By June 30, 2017, at least 15 communities will have finalized a local maltreatment plan prevention plan to guide their future child abuse and neglect prevention efforts.

# *State-Supervised, County Administered Programs*



# *Promoting Safe & Stable Families*

A federal program to:

- prevent child maltreatment among families at risk through the provision of supportive family services
- assure children's safety within the home and preserve intact families in which children have been maltreated, when the family's problems can be addressed effectively
- address the problems of families whose children have been placed in foster care so that reunification may occur in a safe and stable manner
- support adoptive families by providing support services as necessary to that they can make a lifetime commitment to their children

# *Promoting Safe & Stable Families*

**An updated Request for Application was released to counties on December 29. Responses are due January 31, 2017.**

\$2,560,000 total to be awarded to approximately 24 sites

## Four funding Categories

- Family Support
- Family Preservation
- Time-Limited Reunification
- Adoption Promotion and Support Services



# Early Care & Learning Program Administration

## Division of Early Care and Learning

### Child Care and Development Fund

CO Child Care Assistance Program

Child Care Licensing & Administration

Child Care Quality Initiatives

County Departments of Human/Social Services

Colorado Child Care Assistance Program

Early Childhood Councils

Child Care Quality Initiatives

# *Child Care & Development Fund Administration*

- **The Division of Early Care and Learning is the state administrator of Colorado's Child Care and Development Fund block grant**
- Funding supports statewide child care licensing, subsidy and quality improvement activities
- Administration is guided by the federally-verified State Plan

# *Colorado Child Care Assistance Program Administration*

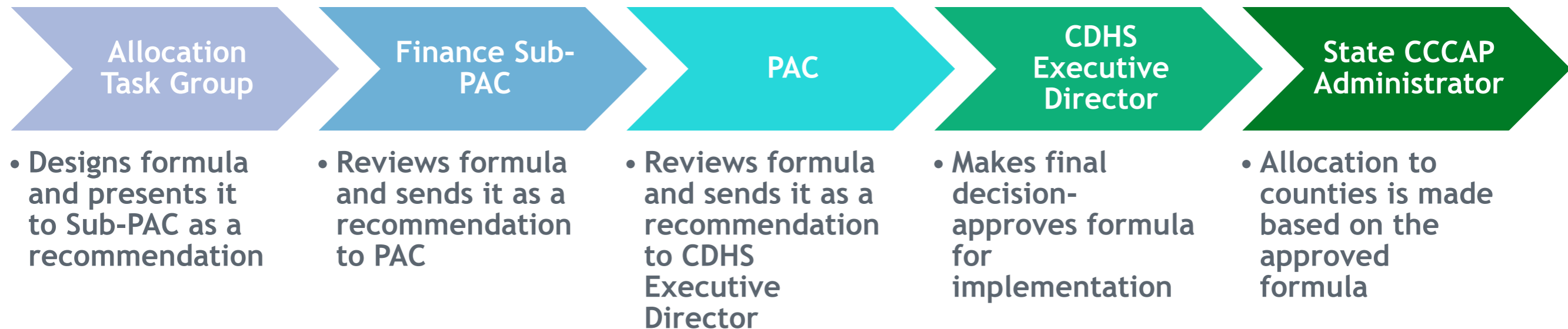
- **County Departments of Human/Social Services administer the Colorado Child Care Assistance Program**
- County responsibilities include:
  - determining and re-determining eligibility
  - determining the parents' portion of the cost of care
  - engaging in fiscal agreements with providers
  - providing referrals and education to families about other county benefits or early childhood programs
  - setting entry and exit levels in their county within the allowable percentages of the Federal Poverty Guidelines (FPL)
  - maintaining wait lists for eligible families when needed
  - meeting all applicable federal and state rules and regulations

# *Colorado Child Care Assistance Program Administration*

- **Direct service** is defined as providing eligible households with access to high quality, affordable child care that supports healthy child development and school readiness while promoting household self-sufficiency and informed child care choices.
  - Recipients can use subsidies to defray the cost of care in the child's home, another family's home or a child care center while they engage in eligible activities such as employment, searching for employment or education/workforce training.
- CCCAP is funded by a mixture of federal, state, and county dollars and parent fees

# CCCAP Allocation

- The Allocation Task Group currently has **12 voting members**, 9 from counties and 3 from the state
- The Allocation Task Group is a **public meeting**, however there can be only one voting member per county



# CCCAP Allocation

- The current allocation formula seeks an **equitable distribution of direct service dollars among counties**
- **The total county allocation for SFY 2016-17 is \$88,393,240**
- Counties are responsible for any over-expenditures of their CCCAP allocation.
- Colorado spent 99.7% of the allocation in SFY 2015-16 and is on track to expend the full allocation in SFY 2016-17.



# Quality Initiatives Administration

- **Early Childhood Councils are designated in state statute as the local entity responsible for supporting the implementation of quality initiatives**
- Quality initiatives are funded by a mixture of federal and state dollars, including the federal Race to the Top - Early Learning Challenge grant
- As of December 2016, 15% of the 4,298 eligible early childhood programs are rated high quality (Colorado Shines Levels 3-5)



**COLORADO  
SHINES**  
START EARLY  
START STRONG  
QUALITY EARLY LEARNING

PROGRAM QUALITY RATING



# *Early Childhood Councils*

- **Early Childhood Councils are formed with the involvement and consent of county commissioners**
- Serve to create a seamless system of early childhood services representing collaboration among various public and private stakeholders for the effective delivery of early childhood services in the area of:
  - Early care and education
  - Family support
  - Mental health
  - Health
- These services support children eight years of age or younger and their parents in a manner that is responsive to local needs and conditions.

# Local Agency Funding for SFY 2016-17

Early Childhood Council	County	Other Local Agency
<p>Early Childhood Systems Building</p> <p>Infant Toddler Quality &amp; Availability Program (ITQA)</p> <p>School Readiness Quality Improvement Program</p> <p>Targeted Quality Improvement Program</p>	<p>Colorado Child Care Assistance Program</p> <p>Infant Toddler Quality &amp; Availability Program (ITQA)</p>	<p>Child Care Resource &amp; Referral Program</p>
<p><b>\$7,684,733</b></p>	<p><b>\$79,719,179</b></p>	<p><b>\$662,835</b></p>

*Questions?*

# Contact Us

**Mary Anne Snyder, Director**

**303-866-5979, [maryanne.snyder@state.co.us](mailto:maryanne.snyder@state.co.us)**

**Brian Conly, Deputy Director**

**303-866-2767, [brian.conly@state.co.us](mailto:brian.conly@state.co.us)**

**Mary Martin, Director, Division of Community & Family Support**

**303-866-5023, [maryw.martin@state.co.us](mailto:maryw.martin@state.co.us)**

**Erin Mewhinney, Director, Division of Early Care & Learning**

**303-866-5946, [erin.mewhinney@state.co.us](mailto:erin.mewhinney@state.co.us)**

**[www.ColoradoOfficeOfEarlyChildhood.com](http://www.ColoradoOfficeOfEarlyChildhood.com)**