

Child Welfare Fact

Intra-Familial Child Fatalities with Prior County Involvement per 1 Million Child Population CW 7

Colorado Counties Inc.

2-25-2011

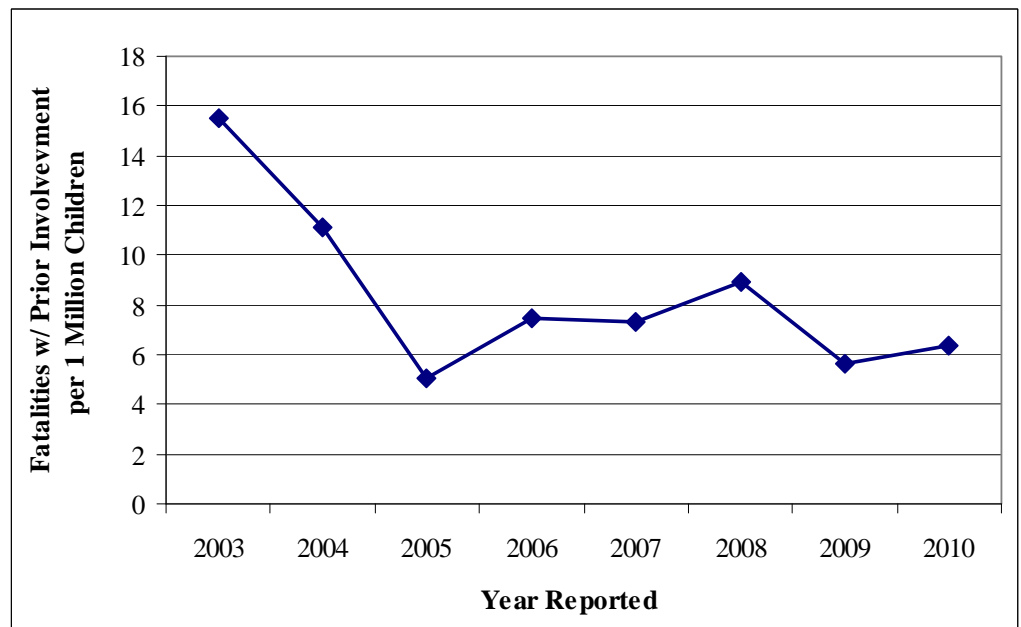
- Colorado's Intra-Familial child fatalities are **very rare** when counties have been involved in child protection services.
- Colorado's intra-familial child fatalities due to maltreatment have declined per million child population when counties have been involved.
- Intra-familial child fatalities with county involvement were highest in 2003 and reached a low in 2005 and have stayed relatively low, even though the state's child population (<17 years) was estimated to have grown by **8.5%**.

CHILD FATALITIES DUE TO INTRA-FAMILIAL ABUSE/NEGLECT WITH PRIOR COUNTY INVOLVEMENT PER 1 MILLION CHILD POPULATION

Colorado's child population (<17 years) is estimated to have grown by **8.5%** between 2003 and 2010. This graph shows Colorado's intra-familial child fatalities with prior county involvement per 1 million child population during that time period.

While any child fatality due to abuse or neglect is too many, it's important to note that intra-familial fatalities where there was prior county involvement are relatively uncommon in Colorado, have declined from 2003 to 2005 and, as of 2010, are back near the 2005 low.

Intra-Familial Child Fatalities with Prior County Involvement Per 1 Million Child Population Over Time



Source: TRAILS. Population data:

https://dola.colorado.gov/demog_webapps

Note: 2003 was selected as it is the first full year of Trails data.